



Envision Door

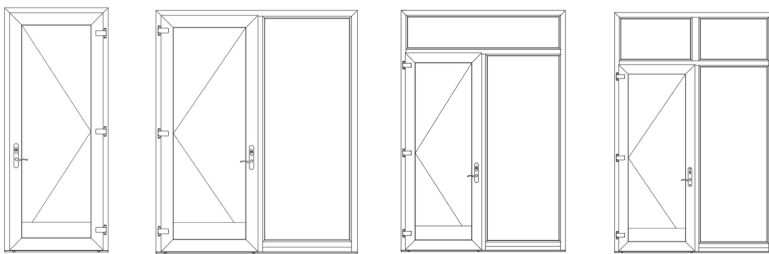
Commercial Swinging Patio Doors for Retrofit and New Construction

Envision, achieving new heights

VPI Quality Windows, a leader in high-performance vinyl commercial window systems, introduces the next generation of doors for mid and high-rise building applications, the Envision Door.

Energy codes continue to evolve, requiring new approaches to building cladding and fenestration design. A ground-breaking new door system, the Envision Series combines the proven energy efficiency of PVC with the robust structural strength needed in high-wind load applications. Providing new design freedom with multiple fused colors, Envision Door is available in a wide variety of high performance configurations.

Standard Configurations:



Options:

- Inswing
- Outswing
- Low Profile (LP) Sill
- High Performance (HP) Sill
- Kick Plate

Standard Features on all Configurations:

- **COMPRESSION SEAL DESIGN** - Enhances protection against water intrusion, air infiltration and allows ease of glass replacement
- **VINYL FRAMES** - Increase thermal performance, add color options and reduce condensation
- **FRAME AND SASH** - Have hollow compartments that allow for optimal reinforcement required in heavy commercial applications
- **FUSION WELDED CORNERS** - Provide environmental comfort and protect against leaks
- **HARDWARE** - Multiple finishes available in both standard and ADA compliant options as well as with opening restrictors
- **INTEGRAL BAR** - Allows for freedom of design while maintaining structural and thermal performance

Commercial-Rated Performance:

Mid to High Rise Construction

Door Type	Test Size	AAMA	Air (CFM/ft ²)	Water (PSF)	U -Factor	SHGC	VT
Inswing w/Transom-HP Sill	41" x 120"	CW-PG50	0.03	7.5	0.25	0.16	0.35
Inswing w/Transom-LP Sill	41" x 120"	CW-PG50	0.26	Ltd.	0.25	0.16	0.35
Outswing w/Transom-HP Sill	41" x 120"	CW-PG45	0.03	6.75	0.25	0.16	0.35
Outswing w/Transom-LP Sill	41" x 120"	CW-PG55	0.03	Ltd.	0.25	0.16	0.35
Inswing w/Sidelite-HP Sill	96" x 96"	CW-PG40	0.01	6.0	0.25	0.16	0.35
Inswing w/Sidelite-LP Sill	96" x 96"	CW-PG40	0.24	Ltd.	0.25	0.16	0.35
Outswing w/Sidelite-HP Sill	96" x 96"	CW-PG40	0.01	6.0	0.25	0.16	0.35
Outswing w/Sidelite-LP Sill	96" x 96"	CW-PG40	0.01	Ltd.	0.25	0.16	0.35
Inswing w/Sidelite & Transom-HP Sill	84" x 120"	CW-PG40	0.01	6.0	0.25	0.16	0.35
Inswing w/Sidelite & Transom-LP Sill	84" x 120"	CW-PG40	0.25	Ltd.	0.25	0.16	0.35
Outswing w/Sidelite & Transom-HP Sill	84" x 120"	CW-PG35	0.01	5.25	0.25	0.16	0.35
Outswing w/Sidelite & Transom-LP Sill	84" x 120"	CW-PG40	0.25	Ltd.	0.25	0.16	0.35

Colors:

Base



White



Tan



Adobe

SuperCapSR*



Black



Architectural Bronze

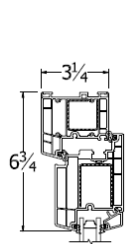
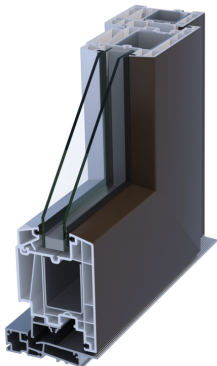


Silver
(clear anodized appearance)

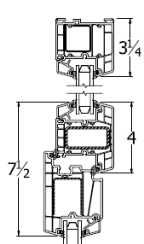


*Printing limitations prevent exact color duplication. Contact your VPI representative for color samples.

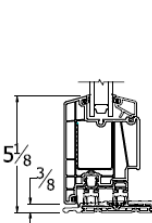
Selected CAD Details:



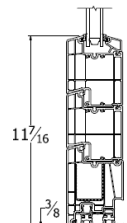
Inswing door common



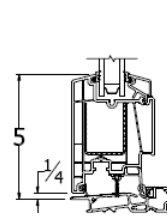
Outswing door with transom above



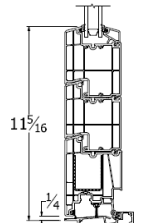
Outswing door low profile (LP)



Outswing door low profile (LP) with kickplate



Outswing door high performance (HP)



Outswing door high performance (HP) with kickplate