

6" Deep Backset Frame For Endurance™ Series Windows

Engineered for Mid-Rise and High-Rise Multi-Family/Mixed Use Applications

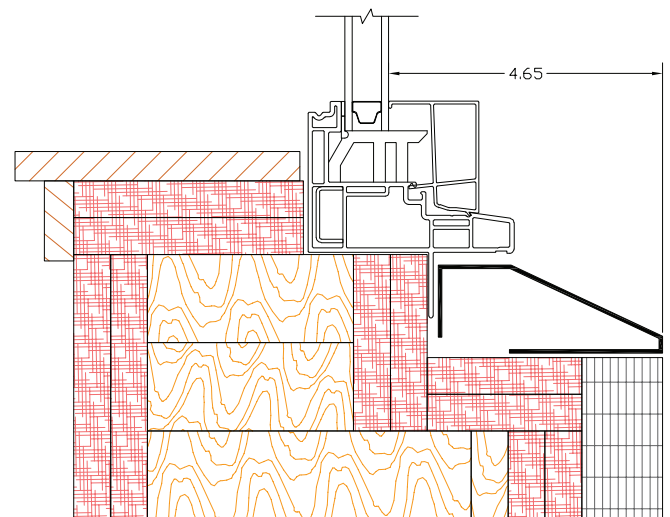
The VPI™ Endurance™ Series window system, which has demonstrated proven performance on thousands of mid-rise and high-rise structures across the United States, is now available with two perimeter frame depth options: 3-1/2" and 6".

The 6" Deep Backset Frame uses the same internal components and fabrication methods as the standard 3-1/2" frame, and delivers the same excellent performance and vast continuous frame design possibilities.

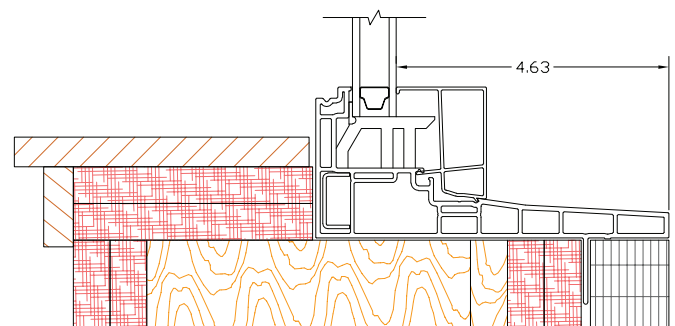
Both frame options can have integral nail fins located at 1" and 1-3/8" setback from the face of the frame; the 6" Deep Backset Frame has an additional option located at 3-7/8". If desired, or the conditions require it, both frame systems can also contain strap anchors for installation at the head and/or jambs, with or without a nail fin.

Providing Solutions and Value

With its variety of nail fin locations, the 6" Deep Backset Frame allows for more placement options within a wall, and an improved way to integrate surrounding materials that can save both time and money. If recessed glazing is desired, the 6" Deep Backset Frame simplifies a common approach to achieve it while reducing the complexity of higher-risk waterproofing details and, on its own, providing highly desirable shadow lines.



3.5" Frame



6" Frame

Recessed Detail Comparison

For more information, please contact the VPI sales representative nearest you.